



· Route Indicator for
Light Rail Systems



LED Signal Light SLE160

SLIM CONSTRUCTION –
STRONG PERFORMANCE



LED SIGNAL LIGHT SLE160

The SLE160 is suitable for installation in light rail systems, certified as route indicator, according to ECE-R6 Category 5. The SLE160 LED Light is exceptionally robust and reaches protection level IP67. Due to its advanced mechanical and electrical features, the light is maintenance-free.

Its unique flat design reduces the risk of damage by other traffic vehicles in comparison with other conventional bulkier devices. The rounded housing shape delivers additional lateral light emission which significantly improves the light visibility from different perspectives.

SLE160 SERIES

PRODUCT FEATURES

- Robust
- Dust and waterproof, IP67
- Durable
- Flat design (15 mm)
- Maintenance-free
- Certified ECE-R6 Category 5
- KBA license number 5 E1 013957
- Shock and vibration resistant
- Optimal lateral visibility



TECHNICAL DATA

ELECTRICAL DATA

Nominal voltage	24V _{DC}
Nominal current	150mA
Operating voltage	16,8 - 32V _{DC}
Nominal power	3W

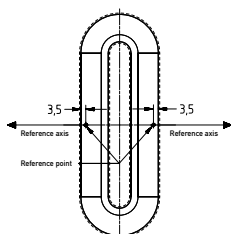
MECHANICAL DATA

Material	Stainless steel and plastic polycarbonate
Weight	approx. 160 g
Protection level	IP67
Operating temperature	- 40... +60°C

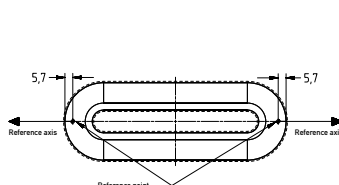
PHOTOMETRIC DATA

Light color	Yellow
Angle of radiation	120°

HORIZONTAL INSTALLATION

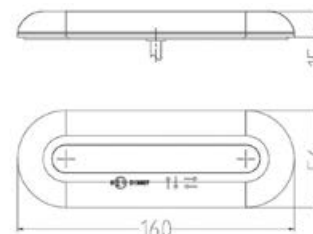


VERTICAL ASSEMBLY*



* +10° max. inclination angle of vehicle's vertical axis

DIMENSION



TSL-ESCHA GmbH

Elberfelder Str. 1 | 58553 Halver | Germany
Phone: +49 2353 66796-0 | Fax: +49 2353 66796-799

TSL S.A.

Rue du Stand 63 | 2800 Delémont | Switzerland
Phone: +41 32 4244-701 | Fax: +41 32 4244-799

info@tsl-escha.com · www.tsl-escha.com

SEE IT!

TSL - A partner of the TURCK group

